



Resylution

A Division of Systecon Inc.



Intelligent Plant Designs for HVAC and Process Systems

Benefits

- **Simplified Field Installation**
 - Single point hydronic, electrical, and control connections requiring less field labor
 - Reduced trade coordination
 - Fast project completion
 - Clearly defined divisions of responsibility
- **Single Source Responsibility**
 - Less risk to installer, designer, and owner
 - Superior quality
- **Lower Installed Cost**
 - Factory designed and assembled
 - More efficient factory labor
- **Factory Testing**
 - System testing allows for performance guarantee
 - System control verification and validation
 - Ensures efficient system operation
 - Simplifies field commissioning
- **Industrial-Grade PLC Controls**
 - Intuitive HMI touch screen
 - Full network communication capability
 - High Durability
- **Reliability**
 - UL labeled control enclosures
 - Complete package is ETL listed
- **Component Flexibility**
 - Customer designated chillers, boilers, pumps, and VFD's
- **Reduced Space Requirements**



Pumps

Resylution offers a wide variety of pumps to suit your needs. Pumps offered in our plant packages include: end suction, horizontal split case, vertical split case, and in-line.

It is common for our packages to include end suction pumps for smaller jobs and horizontal split case for larger jobs. Vertical split case and in-line pumps are a popular choice when space is limited within your enclosure.



Enclosures

Resyolution offers two types of enclosures for your central plant. The types include the standard enclosure or the optional engineered enclosure.

Standard Enclosure Features:

- Double Wall Construction
- 100 MPH Wind Load Rating
- Snow Rated Sloped Roof
- Lifting Lugs
- Self-Contained Air Ventilation and Heating
- Refrigerant Monitor
- ASHRAE STD 15 Ventilation
- Floor Drain
- Receptacles on Each Wall
- Lights with Double Pole Switches at each Door
- Outdoor Light Above Each Door
- EMT Conduit

Optional Engineered Enclosures:

- Special Color
- Insulated Base
- Seismic Calculations
- Increased Wind Load Requirements
- Self-Contained Air Conditioning

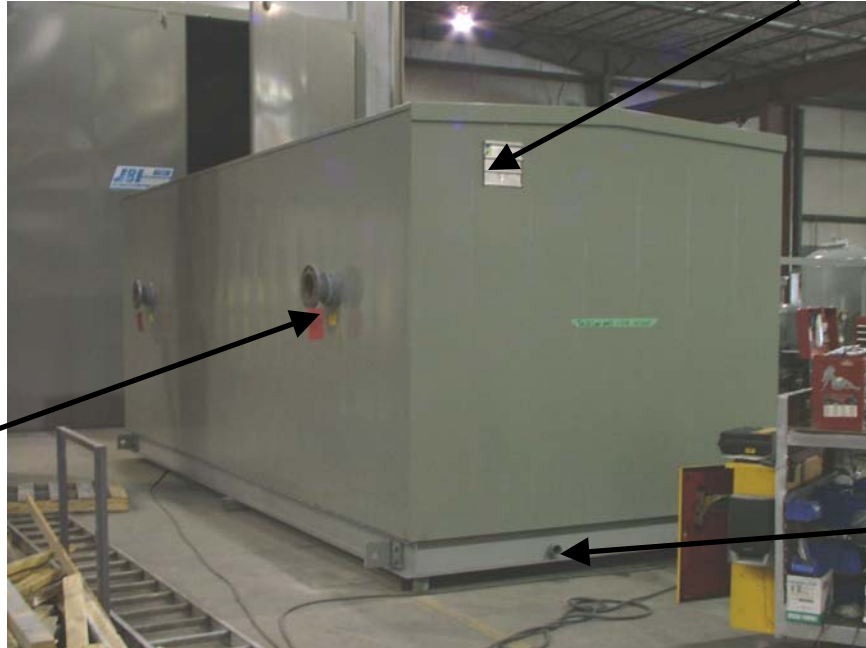


Enclosures

Exhaust Fan Option

Standard Enclosure

Chilled or Hot Water Single Point Connections



Drain Connections

Optional Engineered Enclosure

Main Power Disconnect

Double Wall Construction

Access Doors

Outdoor Lighting



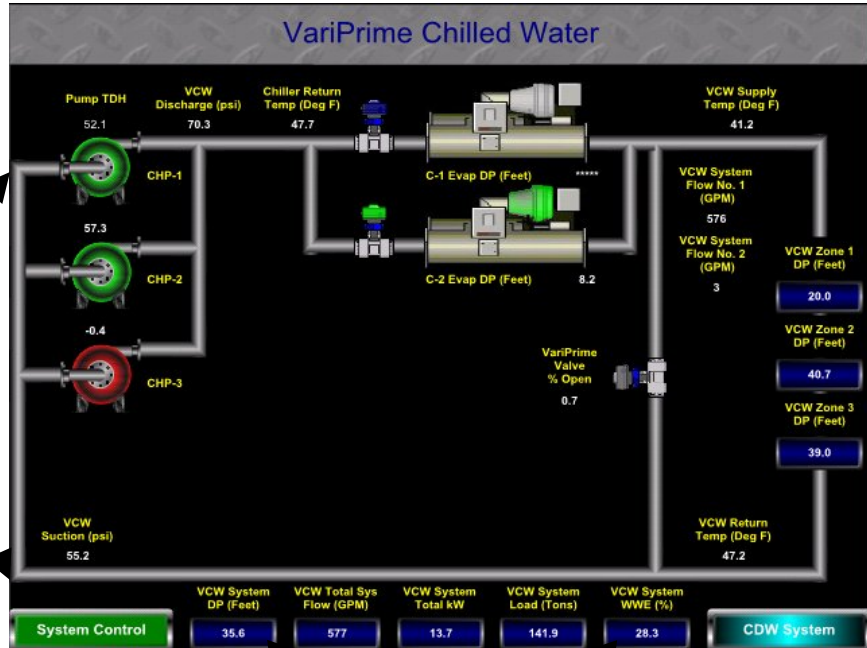
SCRIPT

Systecon's Remote Integrated PLC Technology

- The operator is allowed to choose a screen for changing of set points, time and sequencing delays, and status and failure indication functions
- The following page offers a typical *SCRIPT* graphical user interface
 - The top graphic represents the main screen that allows one click access to the current status of each system component
 - The bottom graphic represents the status screen for the variable chilled water pumps



SCRIPT Graphic User Interface



Unique System Layout Graphics

Intelligent Navigation Buttons

Intuitive Screen Interface

Current System Information



Motor Control Center

Resylation offers a motor control center in a concise package for your central plant system. Standard features include:

- Single Point Power
- 65,000 AIC Interrupt Capacity
- Individual Disconnects for all Components
- 120 Volt Load Center with Circuit Breaker

The Following Options Are Also Offered:

- Bypasses on Drives
- Single or Double Power Disconnects
- Rigid Conduit
 - Multiple Point Power
- Transformer



Cooling Towers

Cooling towers found on our packages include the following standard features:

- CTI Cooling Tower
- VFD Tower Fan Control
- Tower Bypass Valve
- Tower Make-Up Water

Cooling towers found on our packages include the following optional features:

- Centrifugal Fan
- Stainless Steel Sump
- Sump Sweepers
- Water Filtration
- Redundant Fan Motor
- Chemical Treatment



Chillers

Resylution offers many variations of chillers to suit your cooling needs. The two categories of chillers offered are water cooled, and air cooled. The types of air cooled chillers offered are Screw, Scroll, and Reciprocating. The types of water cooled chillers offered are Centrifugal, Screw, Scroll, and Modular.

Chillers are offered with the following optional features:

- Multiple Refrigerants Choices, Based Upon Manufacturer
- Industrial Grade Compressors
- Chiller Monitoring System
- Vibration Base
- Sound Enclosure
- Remote Evaporator

